

angel[®]

UK Terrorism Protection of Premises Plus

TPP+

Tailored insurance and support for your business



The Terrorism (Protection of Premises) Act 2025, also known as Martyn's Law, received Royal Assent on 3 April 2025, and is expected to come into force next year. The legislation aims to strengthen security and organisational preparedness at public premises and events across the UK to better prevent and respond to terrorist attacks.

What this means for businesses:

Businesses responsible for premises such as shopping centres, sports venues, concert halls, places of worship, hotels, and other large public venues, as well as those hosting events like festivals, conferences, and markets, should begin reviewing their security measures, conducting risk assessments, and preparing to meet the new legal requirements - well in advance of the act's full implementation.

How TPP+ supports your business preparation:

At Angel Risk Management, we understand the challenges businesses face in today's world. That's why we've created TPP+ to help protect businesses of all sizes - including SMEs. Our product is designed to help you ensure compliance with the act by providing coverage alongside proactive risk mitigation, expert advice, and practical support before, during, and after an incident. It includes essential services such as security assessments, crisis management planning, 24/7 incident support, and trauma counselling - helping you safeguard your staff, customers, and operations while maintaining resilience against evolving threats.

Key benefits

- **Designed with you in mind** – Whether you run a small venue, are a medium sized business or a larger operation, our policy helps you meet legal requirements and stay protected.
- **Proactive protection** – We help you prepare for potential risks and take appropriate steps to help mitigate the risks associated with terrorism.
- **Built specifically for the UK** – Our policy is tailored to meet the needs of businesses operating in the UK, including premises with capacities of over 200 people.

Why choose TTP+?

- **Specialised coverage** - Our policy is designed for a wide range of businesses, including retail shops, restaurants, entertainment venues, places of worship, sports grounds, schools, and more.
- **More than just insurance** - We offer services that go beyond financial coverage, providing practical support to help you prepare for, manage, and recover from incidents.
- **Expert advice and support** - Our trusted partners, S-RM and MBL, are here to guide you every step of the way, from planning to recovery.



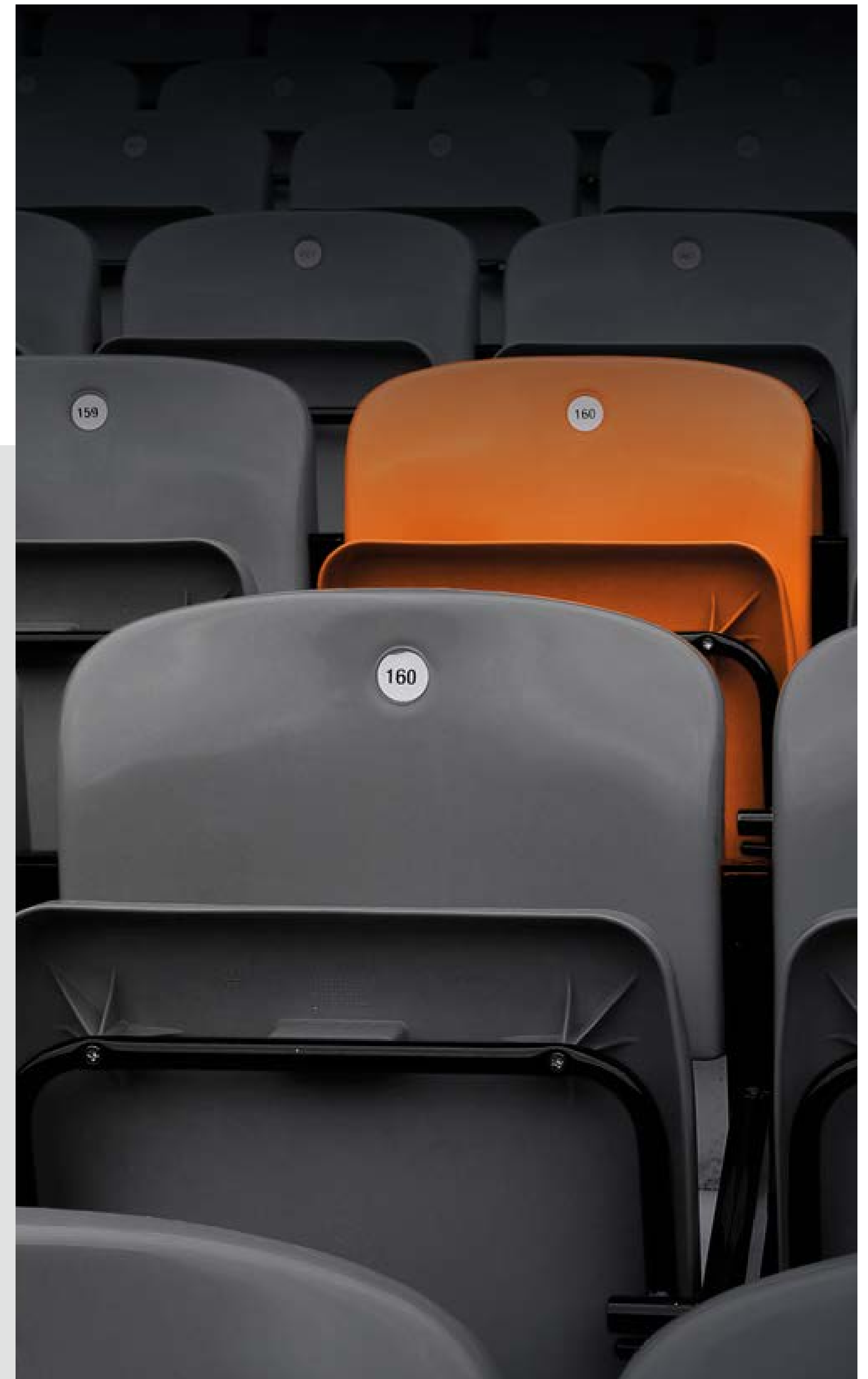
SRM – our crisis response experts:

S-RM is a leading global crisis management consultancy with 12 regional offices across five continents and experience in over 140 countries. They offer specialist advisory services designed to enhance business resilience and ensure staff safety.



MBL - our trauma management and support experts:

MBL provides rapid response trauma counselling and support for all individuals affected by incidents globally, offering comprehensive assistance through a large network of professional psychologists and clinical social workers.





What's included?

limits of cover available

£250,000 up to £10,000,000

Our policy provides support at every stage:



Before an incident:

- A detailed guide to help you understand and meet the requirements of the act.
- Security checklists to help you identify and address risks.
- A one-hour consultation with S-RM to create a tailored crisis management plan.
- Access to global security insights to stay informed.



During an incident:

- A 24/7 hotline for immediate help from our experts at S-RM and MBL.
- Guidance to manage the situation and communicate effectively with staff, customers, and authorities.



After an incident:


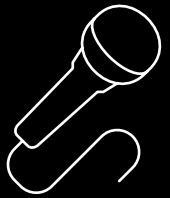


- Continued support from S-RM for managing your reputation and communications.
- Trauma counselling and emotional support for those affected, including their families, provided by MBL.

The progression of a typical incident

- **Rapid evolution**
Terrorist attacks unfold through distinct stages - from initial assault through potential hostage situations and law enforcement response.
- **Critical decision points**
Each stage presents moments where preparedness determines outcomes.
- **Immediate response**
The first critical minutes require pre-planned procedures, clear communication with law enforcement, and rapid headcount confirmation.
- **Decisive action**
Organisations that have prepared crisis management plans and trained staff can execute life-saving actions decisively - identifying threats, coordinating with emergency services, and activating business continuity protocols.
- **Organisational resilience**
Those with established response frameworks minimise harm, accelerate recovery, and preserve organisational resilience.

Who needs TTP+?

Our policy is designed to meet the needs of a variety of organisations, including:

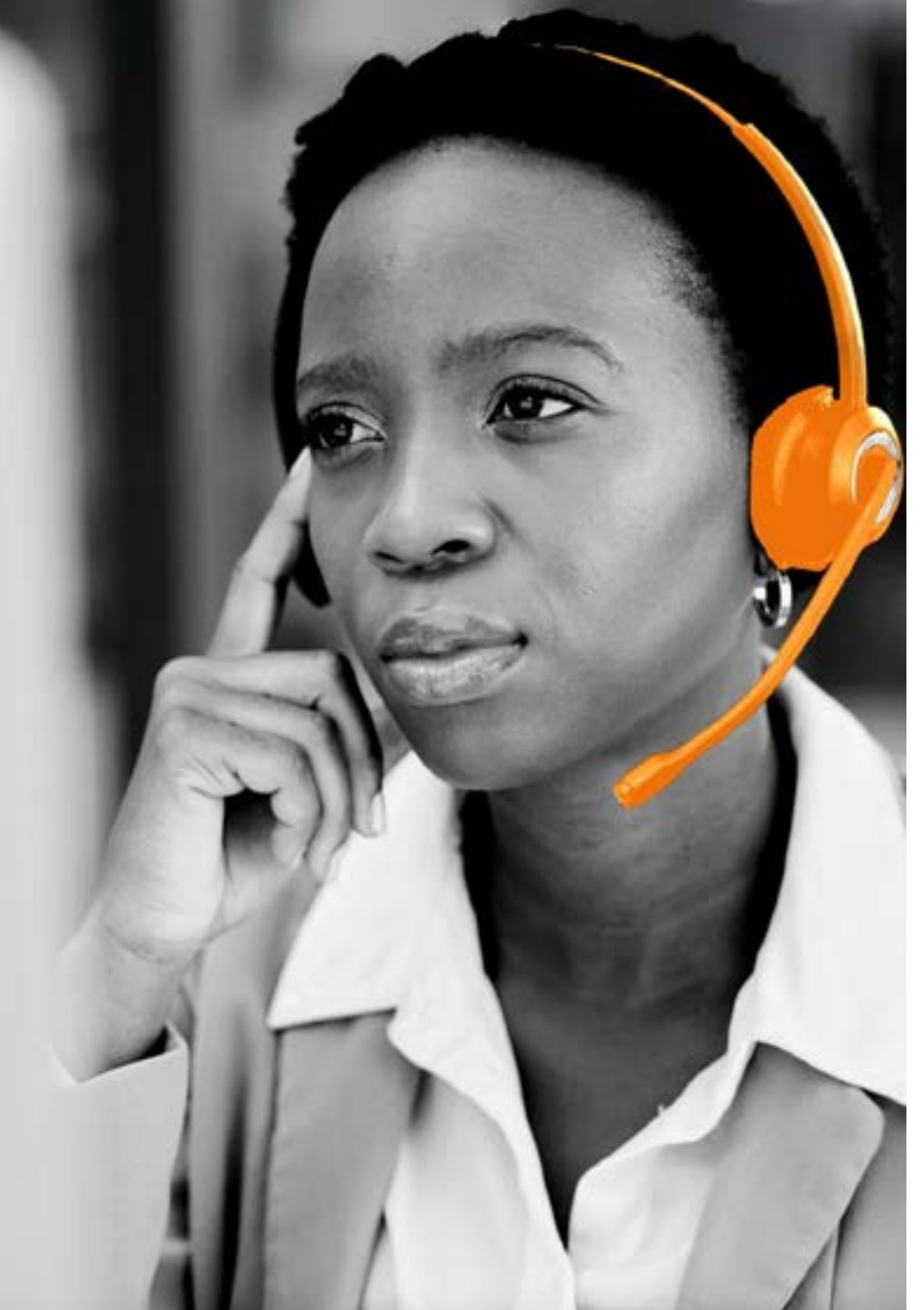
 shops and retail spaces	 Restaurants, bars, and nightlife venues	 entertainment venues	 sports grounds
 leisure facilities	 public services & facilities	 healthcare providers	 schools and childcare facilities
 transport hubs	 places of worship	 tourist attractions	 hotels & holiday accommodation

Our claims promise – helping you recover quickly

We know how important it is to get back on track after an unexpected event. That's why we're committed to providing fast, fair, and supportive claims services.

- **Global and local support:** Our team is ready to help you wherever you are, with the expertise to handle claims quickly and efficiently.
- **Personalised service:** We work closely with you to understand your business and provide tailored solutions.
- **Expert guidance:** Our claims team is highly experienced and focused on helping you recover and move forward.

When you choose Angel Risk Management, you're choosing a partner who's dedicated to your business's success and recovery.



Get in touch

TPP+ is readily available to quote and bind on Angels Quick Quote platform or contact the team directly.

For more information or to discuss how we can protect your business please get in touch:

Gareth Groves
Terrorism Underwriter
M 07973 867 018

Katie Capp
Terrorism Underwriter

This document is for informational purposes only. Insurance coverage depends on the specific policy terms, conditions, exclusions, and the facts of each situation. Please refer to individual policy forms for specific coverage details.

Angel Risk Management Limited is an intermediary authorised and regulated by the Financial Conduct Authority (No. 718451) for UK business. Angel Risk Management is a subsidiary of AXA XL.

This brochure does not constitute an offer, solicitation or advertisement in any jurisdiction, nor is it intended as a description of any products or services of AXA XL. All insurance products, including the applicability of coverages, limits and exclusions, are subject to their full terms and conditions. AXA XL is a division of AXA Group providing products and services through three business groups: AXA XL Insurance, AXA XL Reinsurance, and AXA XL Risk Consulting. Coverage availability may vary by jurisdiction. AXA, the AXA and XL logos are trademarks of AXA SA or its affiliates. © 2026. Information accurate as of April 2026.

For business in the Republic of Ireland, Angel and Angel Risk Management are brands used by XL Catlin Services SE, Coverholder on behalf of XL Insurance Company SE. XL Catlin Services SE is regulated by the Central Bank of Ireland (Registered number 659610).



angel
good for business